



34" BENCHTOP DRILL PRESS

30-140

Multiple Spindle Speeds

5 available spindle speeds are available with a range from 620 to 3,100 RPM



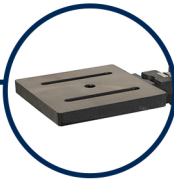
5/8" Chuck

Chuck has a big 5/8" holding capacity



Solid Work Surface

Comes with a 7-3/4" x 7-3/4" adjustable work table



Solid Base

Base is made from sturdy cast iron with a wide footprint for stability



FEATURES:

• MOTOR

Horsepower.....	1/3 HP TEFC
Amps.....	5.5
Volts.....	120V, 60Hz
RPM.....	1,720
Swing.....	34"
Chuck Size.....	5/8"
Chuck Taper.....	JT3
Drilling Capacity.....	5/8"
Spindle Travel.....	3-1/8"
Spindle Taper.....	MT2
Head Rotates.....	360°
Head Tilts.....	45° Right, 90° Left
Speeds.....	5
Speed Range (RPM).....	620 - 3,100
Quill Diameter.....	2-3/16"
Table.....	7-3/4" x 7-3/4"
Table Tilts.....	90°
Table Rotates.....	360°
Maximum Chuck to Table.....	10-3/4"
Maximum Chuck to Base.....	15-1/4"
Column Diameter.....	2-5/16"



Head Tilts 45° Right and 90° Left



Head Moves Forward and Back

DIMENSIONS:

• OVERALL

Height.....	37"
Base Size.....	13-3/4" x 8-1/2"
Net Weight.....	84 lbs.
Shipping Weight.....	90 lbs.
Shipping Carton.....	35" x 14" x 12-1/2"

• WARRANTY..... 5 YEARS



For more information or to find a distributor near you, please visit:

www.rikontools.com

RIKON®

AVAILABLE ACCESSORIES
30-140



12-201

LED Gooseneck Worklight
with Magnetic Base and
Magnetic Clip



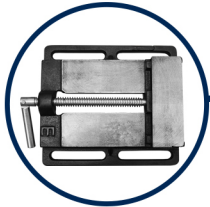
29-202

Mortising Kit



Chisel & Bit

1/4" - 29-914L
5/16"- 29-915L
3/8" - 29-913
1/2" - 29-912



Vises

3" Drill Press Vise - 93-010
4" Drill Press Vise - 93-020
5" Drill Press Vise - 93-030
6" Drill Press Vise - 93-040



For more information or to find a distributor near you, please visit:

www.rikontools.com